

Bannerman Infield Chalker



Model No.: B-LC-1234

(Updated: 25-MAY-10)

Operating Instructions

We want you to obtain the best performance from this implement. If you have any difficulty in carrying out the following instructions please contact us or your local representative or dealer.

Operating Principle; as the chalker is pushed forward the marking material is carried forward from the bottom of the hopper, by a reciprocating plate (Item #10), through a variable front opening aperture, and is discharged into a chute outlet of adjustable widths.

Operating the Infield Chalker

1. Adjust the position of the handle to suit the operator's height.
2. Remove the hopper cover, fill the hopper, and replace the hopper cover.
3. To adjust the rate of material dropping to the turf, first set the opening of the flow plate (Item #5) by relocating the hook end of the cable to the next hole in the cable bar link (Item #23). These holes affect the flow plate opening in $\frac{1}{4}$ inch increments.
4. To set the desired width of line; gently pull back on the adjustment lever (Item #9) and move lever to the correct hole. The hole at the top of the index plate will open the shutters to a 1 inch width, 2nd hole is a 2 inch width, 3rd hole is a 3 inch width, and the 4th hole is a four inch width.
5. When all adjustments have been made, push the chalker forward at a steady walking pace. The handle on the cover provides a visual means of following the correct line.

To transport the marker over short distances, tilt the handle down at the back until the drive wheels are clear of the ground, and push the marker forward on the rear wheels.

When transporting over a long distance, unlock the hand knobs (item #29) and wind the know clockwise onto the shaft until the striker bar (item #13) clears the cams allowing the front wheels to freewheel. On site, unwind the hand wheel again to engage the cams.

Maintenance




During use always keep the hopper cover in place; preventing the chalking material from becoming damp. After use always empty the chalking material from the hopper. Push the chalker forward to clear the bottom plate and outlet of chalking material.

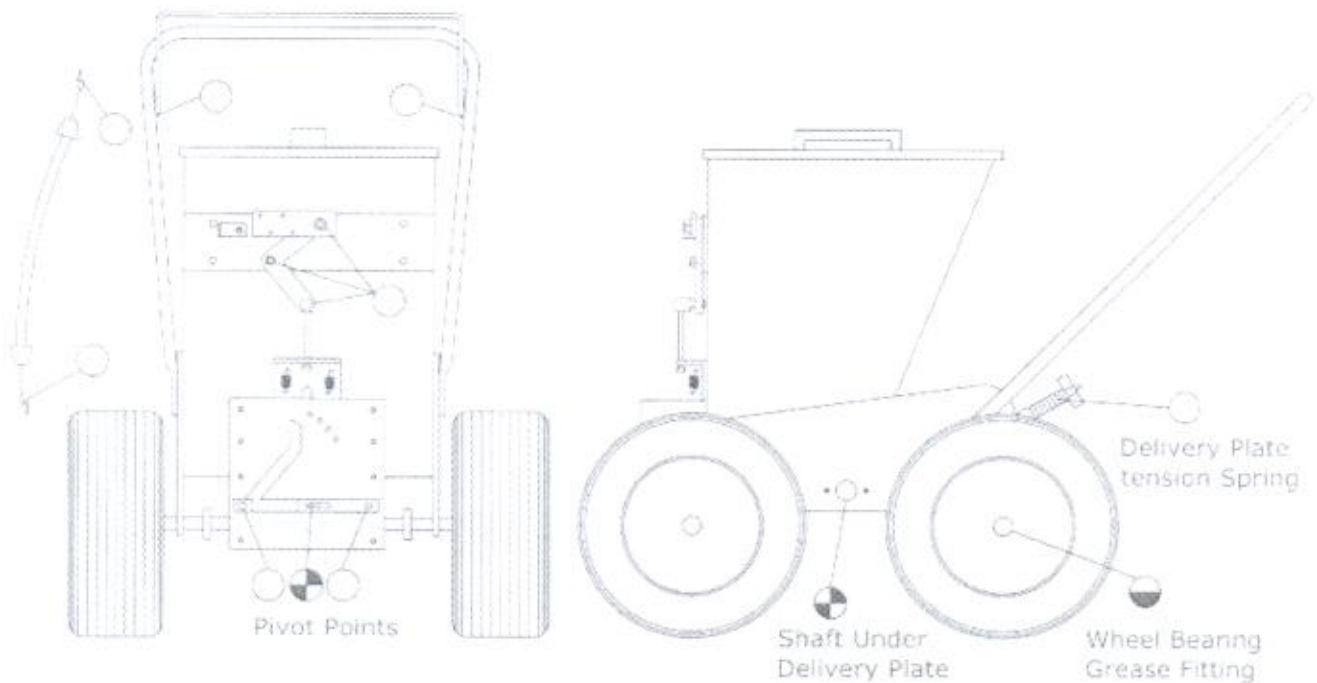
The necessity of thoroughly cleaning the implement after use cannot be overstressed, if delays and frustration are to be avoided.

When the chalker is cleaned, lubricate all the points as show on the diagram.

LUBRICATION CHART

KEY~

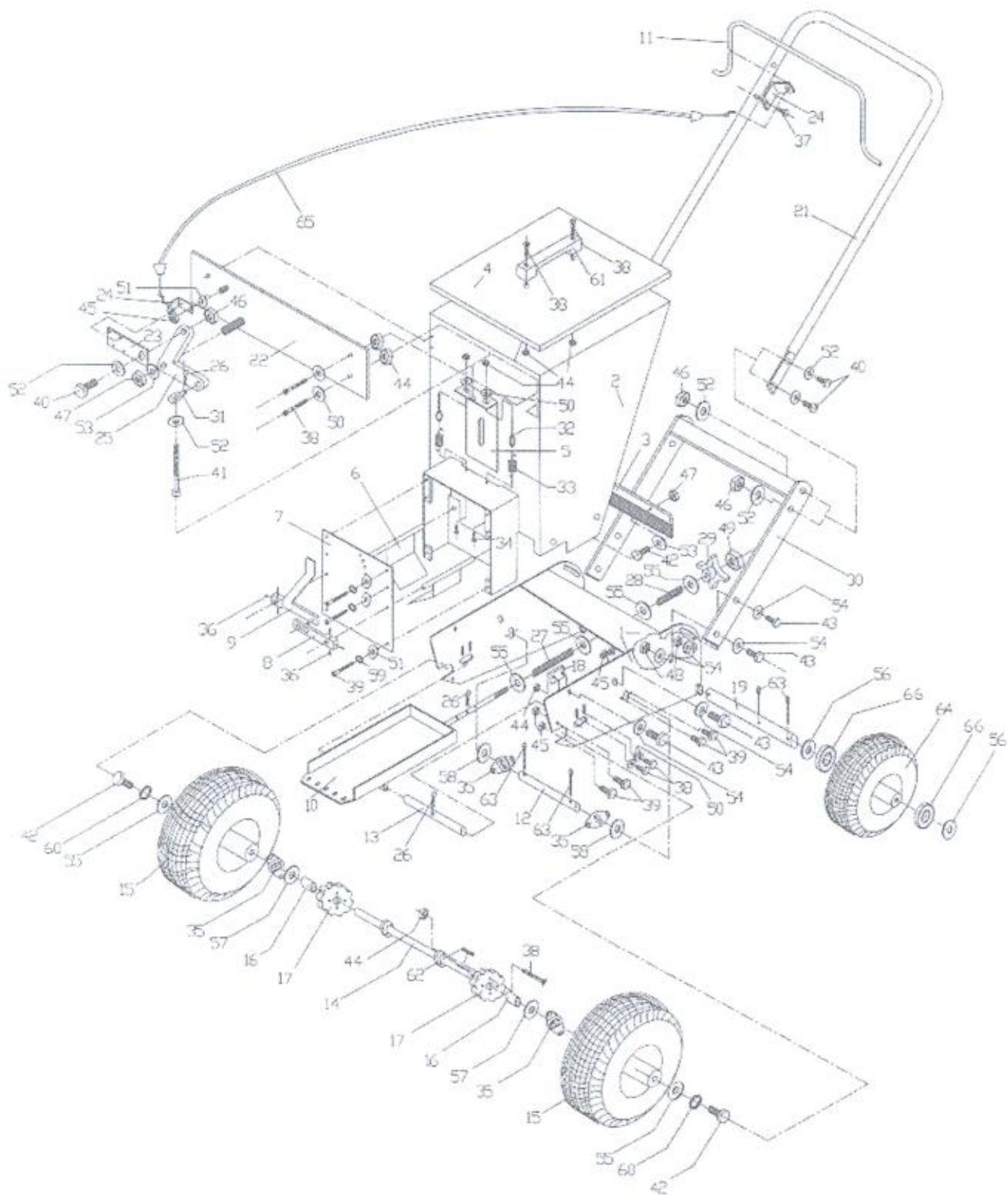
-  Grease Regularly
-  Grease Periodically
-  Oil Periodically



Bannerman Infield Chalker

Model No.: B-LC-1234

Year: 2010



B-LC-1234 Infield Chalker

ITEM #	PART NUMBER	DESCRIPTION	QTY.
1	01201	Chassis	1
2	01202	Hopper	1
3	01203	Strip, Brush	1
4	01204	Lid	1
5	01205	Flow plate	1
6	01206	Shutters	2
7	01207	Index Plate	1
8	01208	Connecting Link	1
9	01209	Adjustment Lever	1
10	01210	Delivery Plate	1
11	01211	Handle, Bail	1
12	01212	ROLLING SHAFT	1
13	01213	STRIKER ROD	1
14	01214	CAM DRIVE SHAFT	1
15	01215	WHEELS - DRIVE	2
16	01216	SPACER - FRONT WHEEL	2
17	01217	CAM	2
18	01218	BLOCK - RUBBING	2
19	01219	AXLE - REAR	1
20	01220		
21	01221	UPPER HANDLE	1
22	01222	PLATE - LEVER & CABLE	1
23	01223	CABLE LINK BAR	1
24	01226	BRACKET - CABLE	2
25	01225	LEVER-90° PIVOT	1
26	08174	PIN-HITCH	1
27	01227	SPRING - COMPRESSION 4 1/2"	1
28	01228	SPRING - LIGHT COMPRESSION	1
29	01229	KNOB-HAND	1
30	01224	HANDLE - LOWER	1
31	01231	5/16-18 SWIVEL	1
32	01232	BOLT - 10-24 EYE	2
33	01233	EXTENTION SPRING	2
34	01234	CLEVIS - PIN 1/4X1/2	2
35	01235	BEARING - CAM & ROLLER	4
36		SET SCREW - 1/4-20X1/4	6
37	11232	10-16X5/8 SELF TAPPING SCREW	1
38	03002	BOLT - 10-24X1/2	18
39	03013	BOLT - 1/4-20X3/4	16
40	02002	BOLT - 5/16-18X1	5
41	03053	BOLT - 5/16-18X2.75	1
42	03026	BOLT - 3/8-16X1.5	4

43	00537	BOLT - 7/16-14X1.5	8
44	02048	NYLOCK - 10-24	20
45	02066	NYLOCK - 1/4-20	9
46	02004	NYLOCK - 5/16-18	5
47	03022	NYLOCK - 3/8-16	3
48	15047	NYLOCK - 7/16-14	8
49	03073	JAM NUT - 1/2-13	1
50		FLAT WASHER - #10	10
51	03007	FLAT WASHER - 1/4	7
52	02005	FLAT WASHER - 5/16	9
53	02024	FLAT WASHER - 3/8	3
54	09016	FLAT WASHER - 7/16	12
55	03032	FLAT WASHER - 1/2	6
56	04037	FLAT WASHER - 5/8	4
57	06037	FLAT WASHER - 3/4	2
58	08034	SHIM WASHER - 3/4	2
59	02056	LOCK WASHER - 1/4	6
60	03049	LOCK WASHER - 3/8	2
61	14118	GRAB HANDLE	1
62	03045	KEY - 3/16X3/16X1.25	1
63	00811	COTTER PIN	6
64	01236	REAR WHEEL	2
65	01911	CABLE	1
66	04041	BEARING - 5/8" WHEEL	4
67	02082	GRIP - HANDLE	2